

# LRPC Landscape/Signage Sub-Committee

—

*The mission of this Sub-Committee was to study landscaping and signage improvements to enhance the beauty, functionality and quality of outdoor spaces on SCCCA campuses and common elements in the community in general, and to set priorities based on those findings.*

# The Team

*Virginia Bratt*

Chairperson

- MEMBERS:
- James Clark
- Sue McHargue
- Jeff Moore
- Ernie Zeigler



# Tasks

In addition to weekly LRPC meetings, the Sub-Committee met numerous times to set goals and to develop a plan to achieve those goals.

The team conducted group golf cart and walking tours to assess the condition of all the existing landscape and signage.

Toured both North & South Campuses.

Inspected and reviewed all existing landscaping and signage.

Executed tours focusing on the use of Florida Friendly plantings as detailed in UFL Landscape Guide.

Considered future maintenance cost.

Explored solar lighting, outdoor art & sculptures and artificial turf.

Chair worked closely with SCCCA Operations Manager to gain knowledge of past experiences.

---

# A Master Plan with potential for two different paths

- *Use commercial fee contractors*
- *Use a combination of UF expertise for design and subsequent installation by fee contractors*

Working with or without UF will not change our recommendation for a phased approach to our Master Plan implementation

In order to begin our landscaping options as timely as possible, one option at this time is for us is to continue on a path for phase one using design and installation services with commercial contractors.

It is then anticipated for the overall landscape master plan and subsequent phases we will leverage the benefits of UF Landscape Design Services

---

# About the University of Florida's Landscape Services

- Design team lead by Gail Hanson PhD at the university for 22 years
- Gail expressed interest in working with SCC and developing comprehensive plan
- Gail has a demonstrated successful history of creating high quality results for other communities..... The Villages, Lakewood Ranch
- The university will leverage the use of Grad Student to help Gail provide plans allowing SCC and Grad Students to benefit from partnership

## *Use of UF supports that SCC will.....*

Receive viable important recommendations for Florida Friendly plantings

Gail has already toured SCC and considered the community plan

UF so far demonstrated a knowledge and detail on how to best use plantings based on soil conditions, sun exposure, building orientation and suggested soil testing regimen

UF expressed willingness to develop design pattern books

Pattern Books would be used to obtain bids for the installation process

The Sub Committee is still in process of formulating the Master plan but we are putting emphasis to continue our work with UF at this time

# Recommended Phases

Since landscaping updates will be a present and future ongoing process for the SCC Campus, it was decided to establish phases as detailed on the following slides.

---

# Phase One



Sun City Center

- All Median on N. Pebble Beach Blvd ((674 to La Jolla)
- SCC Administrative Building
- Information Center Building
- Library Building



# Phase Two



Sun City Center

- Arts & Crafts Building
- Samaritan Building
- Multi Purpose Building
- Atrium Building & Fitness Center
- Pool Area

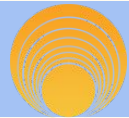
# Phase Three



Sun City Center

- All Medians on S. Pebble Beach Blvd (674 to Platinum Dr)
- South Community Hall
- All Sports Areas

# Phase Four



Sun City Center

- Landscape former ClubLink Properties Acquired (if applicable)
- Continue to maintain and Update as needed

# Recommendations

## The Information Center

Add concrete edging around newly expanded bed to make for one continuous landscape bed fronting the building along Pebble Beach

Use River Rock as ground cover in beds

Continue walkway from fountain seating area to sidewalk

Add a cluster of palm trees to right of center sign

Expand beds with shrubs, flowering bushes to create a tiered and highly textured design

Add varied plantings, stone ground cover to enhance existing fountain

Add Landscape Flood Lighting

---







# Recommendations

## SCCCA Administration Building

Add concrete edging around newly expanded bed to make for one continuous landscape bed fronting the building

Use River Rock as ground cover in beds

Move both Crepe Myrtle to N Pebble Beach median

Add palm trees to front bed

Add metal sculpture to right of entrance

Enhance plantings & ground cover by flag

Frame front entry way with plantings

Expand beds with shrubs, flowering bushes to create a tiered and highly textured design

Add Landscape Flood Lighting

---







# Example of Outdoor Metal Sculptures Administration Building Alcove

---



# Example of Outdoor Metal Sculptures Campus Medians

---

# Recommendations

## SCCCA Library Building

Add concrete edging around newly expanded bed to make for one continuous landscape bed fronting the building

Use River Rock as ground cover in beds

Move Crepe Myrtle to N Pebble Beach median

Install new sod

Remove two trees on the front right side of the building

Add palm trees to the front right side and along building entrance

Expand beds with shrubs, flowering bushes to create a tiered and highly textured design

Add Landscape Flood Lighting

---





# Recommendations

## North Pebble Beach Medians

Remove existing landscaping in accordance with new plan

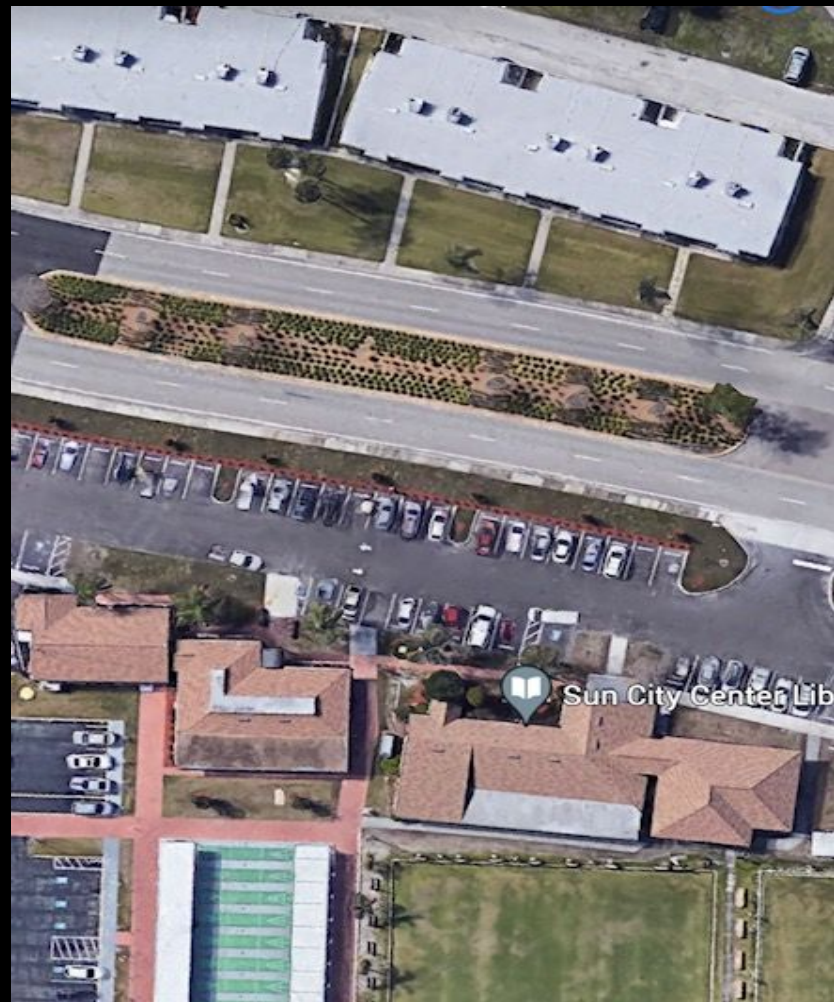
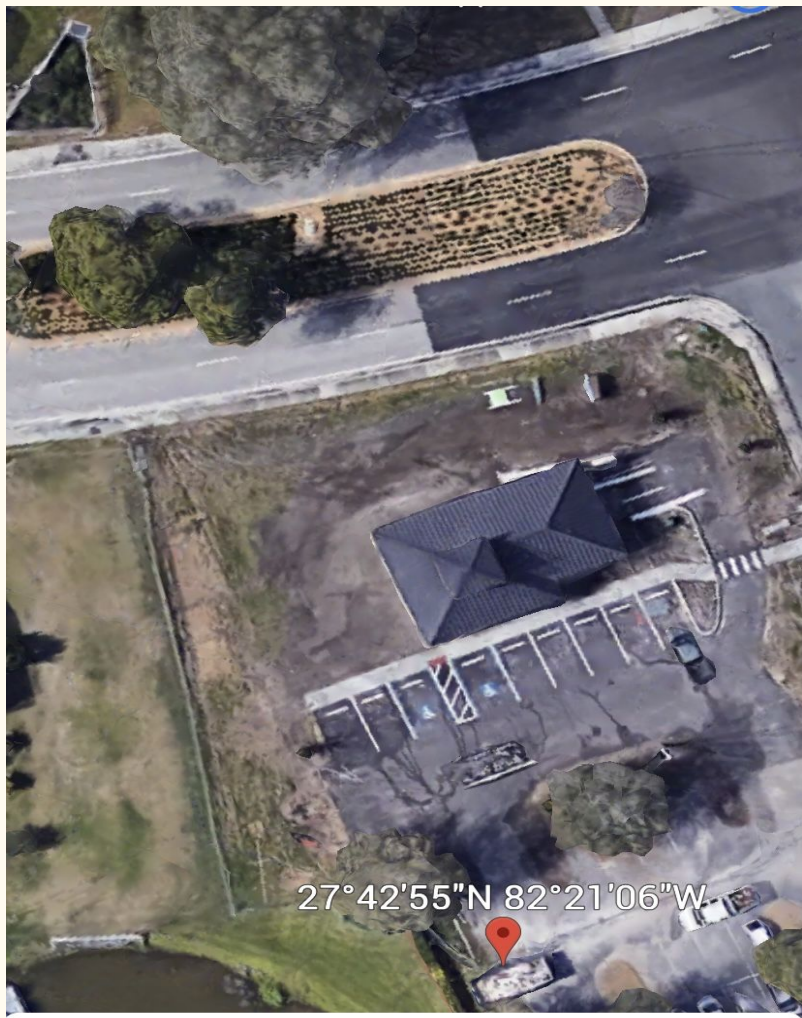
Add numerous palm trees to create updated and standardized look

Add sod and install irrigation systems as needed

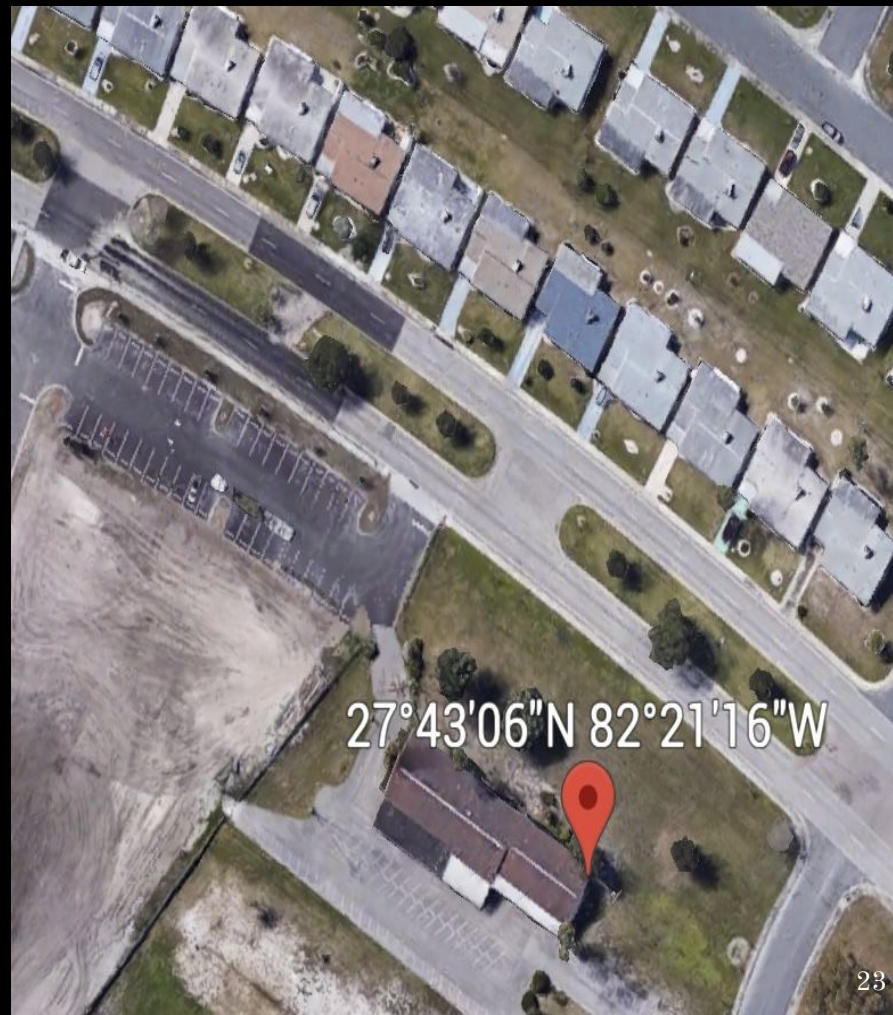
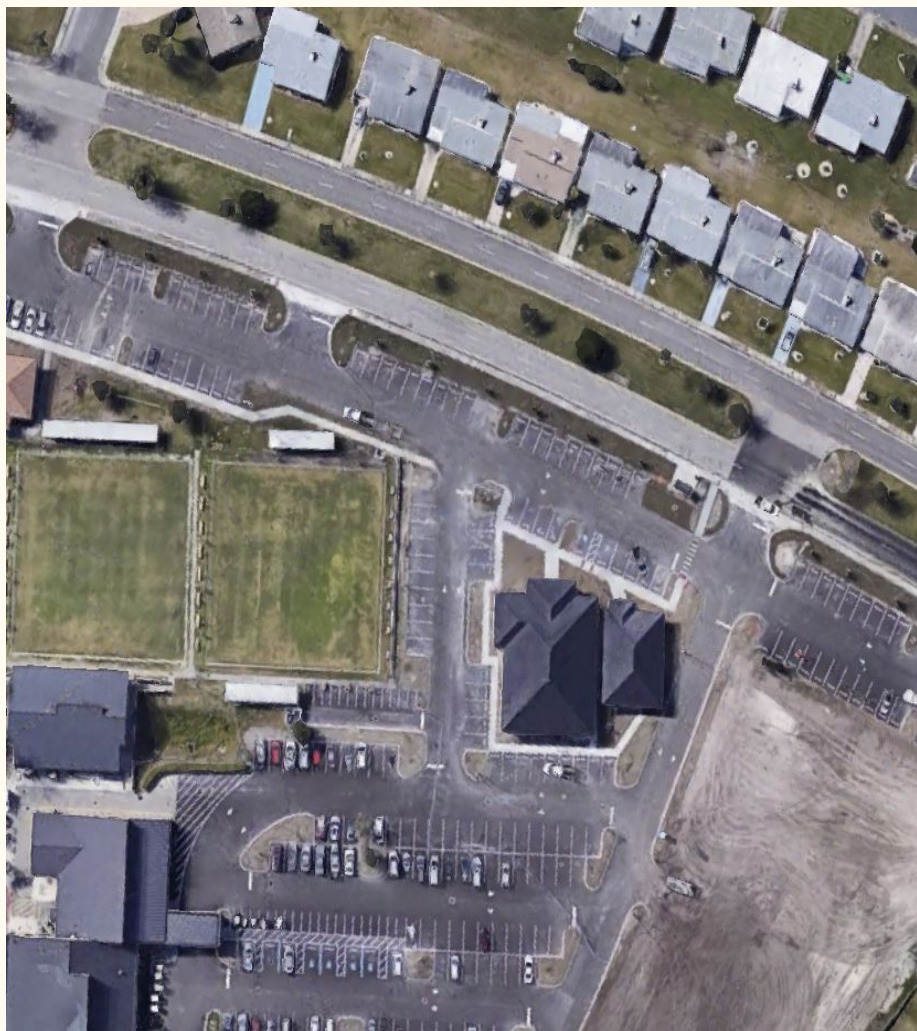
Retain existing Crepe Myrtle Trees

Plans should include future installation of outdoor sculpture and solar lighting

---













## Example of Outdoor Solar Street Lighting



*The following slides will give us a peek into  
the future of a community wide Landscape  
Master Plan*

---





















**SUN CITY CENTER  
COMMUNITY  
ASSOCIATION  
OFFICES**



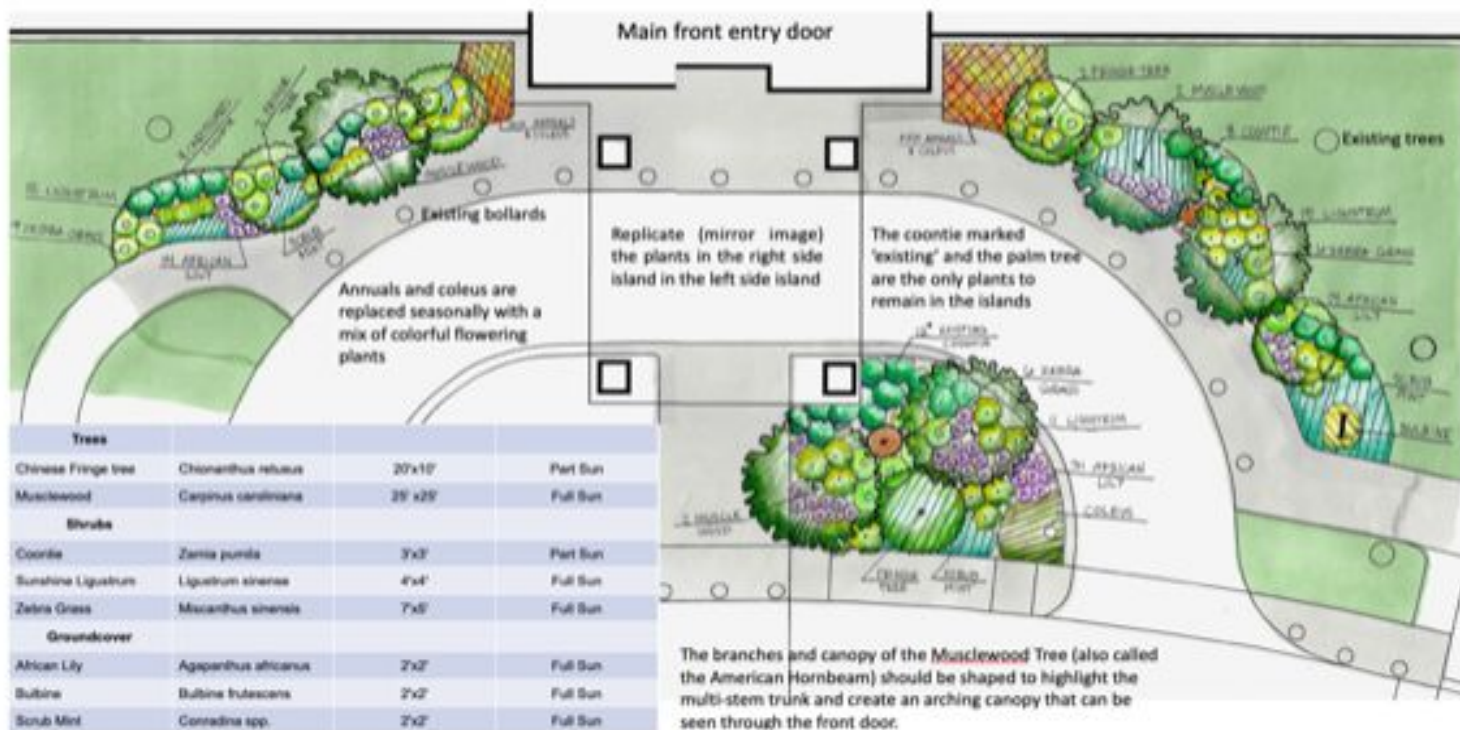


*The following slides will give us a peek into  
UF Pattern Books created by the UF  
Landscape Design Team*

---



## Plant Layout and list for Front Entry Islands and Walkways



## Landscape Design Pattern Book UF Oak Hammock Residential Community



**UF | IFAS**  
UNIVERSITY of FLORIDA



ENVIRONMENTAL  
HORTICULTURE



A guide book for the design of landscapes in the Oak Hammock residential community. Includes design notes, landscape plans, and plant lists for the courtyards, the front entry, the parking lot and front walkways, and the stormwater pond

Authors:  
Gail Hansen, PhD, Associate  
Professor, Department of  
Environmental Horticulture  
Maegan Mikkelsen, BS, Plant  
Sciences  
Copyright Dec 2021

## Plant List for U-Shaped Courtyard

### Plant Selection Notes

The plant tables with plant lists for each area offer a variety of recommended plants. The size column lists the height and spread (mature width) of the plants. The planting plan examples give suggested layouts and arrangements for plant materials and bed lines. Plant choices are based on drought tolerance, regional suitability, low maintenance, native status, local availability, and cost.

Specific plant groups were created by matching the physical characteristics and functional attributes of the plants to specific site conditions and user needs in each area. Consideration was given to the typical type of activities (entertaining, walking), building and hardscape conditions (walkways, utilities, windows), and the type of user (elderly residents, delivery people) for each area.

Other considerations included maintenance practices, accessibility, privacy, and safety issues. Plants were chosen that would facilitate use of areas and decrease maintenance, and create safe areas that look attractive.

Common Name	Botanical Name	Size	Light
<b>Trees</b>			
American Hornbeam	<i>Carpinus caroliniana</i>	25'x25'	Full Sun
Bottlebrush	<i>Callistemon</i> spp.	25'x10'	Full Sun
Chickasaw Plum	<i>Prunus angustifolia</i>	15'x15'	Part Sun
Chinese Fringe Tree	<i>Chionanthus retusus</i>	20'x10'	Part Sun
Eastern Red Bud	<i>Cercis canadensis</i>	25'x20'	Full Sun
Flatewoods plum	<i>Prunus umbellata</i>	20'x15'	Full Sun
Japanese Privet	<i>Ligustrum japonicum</i>	10'x25'	Full Sun
Musclewood	<i>Carpinus caroliniana</i>	25' x25'	Full Sun
Pineapple Guava	<i>Acacia salicifera</i>	10'x10'	Full Sun
Rusty Blackhaw	<i>Viburnum rufidulum</i>	20'x20'	Full Sun
Saucer Magnolia	<i>Magnolia xoulongiana</i>	20'x20'	Full Sun
Sweet Acacia	<i>Acacia farnesiana</i>	20'x20'	Full Sun
Sweet Almond Bush	<i>Aloysia virgata</i>	10'x10'	Full Sun
Wax myrtle	<i>Myrica cerifera</i>	20'x20'	Part sun
Wild Olive	<i>Osmarthus americanus</i>	20'x15'	Full Sun
Yaupon Holly	<i>Ilex vomitoria</i>	20'x20'	Part Sun

<b>Shrubs</b>			
Beauty Berry	<i>Callicarpa americana</i>	8'x8'	Part Sun
Butterfly Bush	<i>Buddleia lindleyana</i>	8'x8'	Full Sun
Camellia	<i>Camellia japonica</i>	4'x4'	Part Sun
Flackahatchee grass	<i>Tripsacum dactyloides</i>	6'x6'	Full Sun
Fortune's Mahonia	<i>Mahonia Fortunei</i>	4'x4'	Shade
Hydrangea	<i>Hydrangea macrophylla</i>	5'x5'	Part Sun
Japanese Anole	<i>Fatsia japonica</i>	4'x4'	Shade
Shi Shi Gashira	<i>Camellia hiemalis</i>	4'x4'	Shade
Sunshine Ligustrum	<i>Ligustrum sinense</i>	4'x4'	Full Sun
Sweet Almond Bush	<i>Aloysia virgata</i>	10'x10'	Full Sun
Texas Sage	<i>Leucophyllum frutescens</i>	4'x4'	Full Sun
Thymella	<i>Galphimia</i>	7'x5'	Full sun
Zebra Grass	<i>Miscanthus sinensis</i>	7'x5'	Full Sun

<b>Groundcover</b>			
Asparagus densiflorus	Fastid Fern	2.5'x2.5'	Part Sun
Blue Flax lily	<i>Diemela</i> spp.	2'x2'	Full Sun
Bush Daisy	<i>Euryops</i> spp.	3'x3'	Full Sun
Cast Iron Plant	<i>Aspidistra elatior</i>	18"x12"	Shade
Daylily	<i>Hemerocallis</i> spp.	1'x1'	Full Sun
Holly Fern	<i>Cyrtomium falcatum</i>	3'x3'	Part Sun
Lily of the Nile	<i>Agapanthus africanus</i>	2'x3'	Full Sun
Panic Grass	<i>Panicum virgatum</i>	4'x4'	Full Sun
Plumbago	<i>Plumbago auriculata</i> cvs.	8'x8'	Full Sun
Red Hot Poker	<i>Knapheia Uvaria</i>	2'x4'	Full Sun



### Recommendations for U-Shaped Courtyard- rocks and walkways



#### Rock Gardens

Remove the rock gardens along the paver walkways and relocate the small stones along the walls under the windows. Create a strip of rocks about 3 to 4 feet wide at the base of the walls.

Save and relocate the large stones (limestone boulders). Group the boulders in clusters of 3 or 4 and arrange to look like natural outcroppings of stone. Some of the boulders should be partially buried to create the appearance of rising from the earth.



#### Walkway Edge Treatment

Vary the distance that shrubs are located from the walkway to create a softer natural edge along the straight edge of the brick. This will reduce maintenance by reducing the need for constant pruning to keep the walkway clear. Shrubs adjacent to the walkway should be evergreen with a neat form that does not require constant pruning. Avoid using shrubs and groundcover next to the walkway that will sprawl or spread into the path and reduce the width. The walkway must be maintained for ADA clear width requirements. Use small and medium shrubs and groundcover ( 6" to 24") so that there is a clear view several feet back on either side of the walkway.

Maintain the mulch at the same grade as the walkway pavers and keep pavers clean so they are easy to distinguish from the mulch for walkers who cannot see well in shade or bright sun conditions. Also install accent paved areas for benches or arbors at the same grade to avoid tripping hazards or toe-stubbing.



## Notes on Other Courtyards- seating areas and features



### Shade for Seating Areas

The most important element for physical comfort for the users is shade in the summer, particularly over seating areas. The bench in the left photo would be more useful if a canopy tree were planted behind it so that the canopy arched over the bench. If a tree is not possible or practical, use shade structures, such as the arbor in the bottom left photo. Shade structures are often preferred because they don't drop leaves or twigs on the people below and they are typically less maintenance. However people go outside so they can enjoy nature, so keep good balance of built structures and trees in the courtyard.



### Other Courtyard Features

Other features that enhance the appeal and use of courtyards are water fountains, tables and chairs (preferably moveable), colorful pots with plants, and sculptures. Tables and chairs should be light enough to move into sun or shade areas depending on the time of year. Water features should have moving water to produce a soothing background sound that is not so loud that it makes conversation difficult. Colorful containers for plants are an easy way to create year-around color. Sculptures are a nice focal point so limit the number, one is sufficient in small courtyards. Larger sculptures are better for viewing, but consider the size in relation to the courtyard. The location is also important-opposite an entry door is typically the best for focal points.





# *What's Next?*

- Some detail regarding cement edging
- Estimated Cost
- Debate & Questions
- Action!

# Overall Summary

- Ongoing project management should include a master plan which will provide our SCC Community a more sophisticated look and appeal that most of our rival adjacent competing developments are already exhibiting.
- Next steps will include obtaining outside design assistance with both UFL and commercial vendors in order to continue to evaluate feasibility of landscape updating.
- Cost analysis can not be rendered at this time pending board action initiating approval of bid process with CA Operations Manager.
- Landscape Task Force chairperson should continue to work closely with CA Operations Manager.
- END