

SUMMARY

On January 19, the first focus groups of three were presented with 3 frameworks, or ways to organize future SCC projects for improved function and use of space. Each framework has the same four elements listed below, differing in their arrangements. Each arrangement is a phase able, master planned with the intention of improving the existing building's function, usage of space, and possible additional building in the future as assets are available.

DIRECTIONS

Listed below are 4 elements: Rollins Building, Resort style pool, Makers Place, and Green space with descriptions. Please rank the elements you feel that most align with the community values. You may leave additional comments in the space provide below and on the back of the sheet. Turn in the complete sheet to the Community Association office by February 1, 2023. Your comments / ideas will be incorporated into the next focus group in February.

A - ACTIVITY HUB

Move leisure activities across the parking area to the existing open space of the campus and create a new destination place.

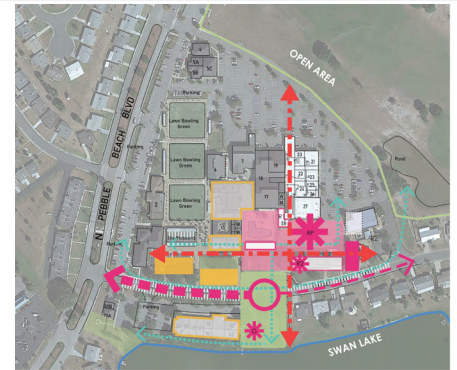
B - MAKERS PLAZA

Revitalize the center of campus, by redesign the existing pool area to connect to pineapple plaza and a new linear Pedestrian pathway for future "make and sell" buildings.

C - COMMUNITY MAIN STREET

Transform Cherry Hills Drive to a community main street adjacent to an expanded centralized, resort pool area with supporting activities, connected to a lakefront park.

FRAMEWORK



ELEMENTS OF FRAMEWORK

ROLLINS BUILDING

RB1 - Remove/ Rebuild the Rollins building with functions that better suit the community's needs.

RB2 - Restore and remediate the Rollins building to its current functions.

RB3 - Transition the Rollins building to a shaded open air pavilion, supporting the resort pool, possible future restaurant and other leisure sport and entertainment functions.

MAKERS PLACE

MP1 - Relocated lawn bowling allows a framework for future buildings and an artesian linear outdoor mall. While making space for a second Florida room.

MP2 - Create an artisan linear pedestrian pathway with new make and sell buildings opposite existing arts + crafts buildings.

MP3 - Create an artesian themed main street on Cherry Hills Dr. adding golf cart parking, connecting the SCC Arts + Craft building on Swan Lake to a "make and sell area".

RESORT POOL

RP1 - Create a new, resort style destination area away from the center of campus but adjacent to relocated leisure activities.

RP2 - Renovate existing pool area to a resort level open to pineapple plaza and add a entertainment gazebo to the parking area, creating an entertainment area.

RP3 - Expand pool area - create a resort style destination hub served by a reimagined café and open to the lakefront park (Swan Lake).

GREEN SPACE

GS1 - Between future and existing buildings, create a Linear green park connecting to the satellite resort area to existing community lawn area.

GS2 - Relocate existing Arts and Crafts buildings (sawdust engineers + ceramics) to new programed Arts + Crafts building creating a green area in the center of the campus.

GS3 - New green space are connecting the destination area (RP3) to the water with a water edge entertainment gazebo.

INSTRUCTIONS

Please rank Elements of Framework that are the most important for the community using the elements codes above in order of most to least important. You can choose elements from any framework.

1. _____
2. _____
3. _____
4. _____

COMMENTS
